

# ADVOCACY FOR REPRODUCTIVE RIGHTS THROUGH DATA COLLECTION AND PRESENTATION

Janna Mangasep, Lift Louisiana & Newcomb College Institute

## Lift Louisiana

To educate, advocate, and litigate for policy changes needed to improve the health and wellbeing of Louisiana's women, their families, and their communities.

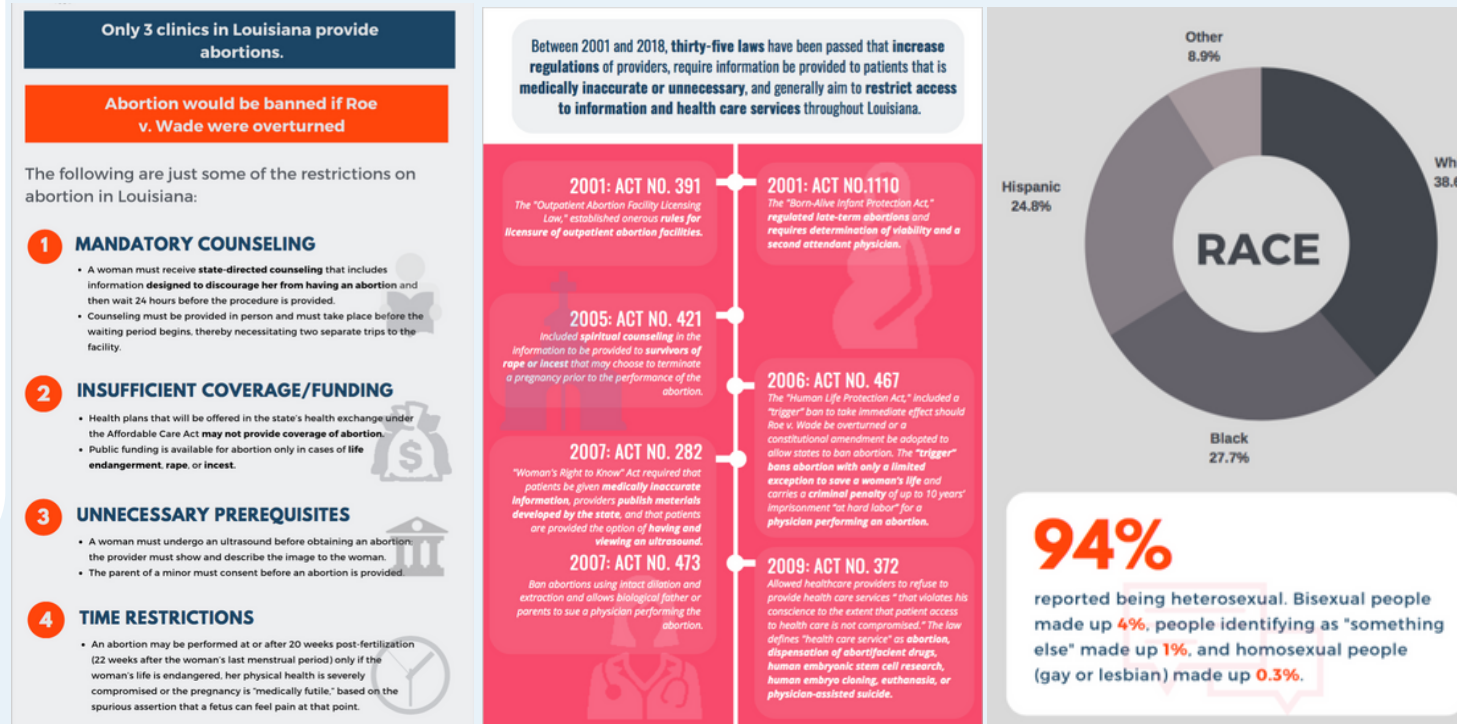
Lift Louisiana values collaboration, analyzing and shifting power, compassion, self-determination, and transparency and accountability. The work I've done for Lift this semester encompassed all of these values. Primarily, my work as a communications intern centers around data. How should we present it in an easy to digest manner for the general public to inform themselves on prevalent issues regarding reproductive justice in Louisiana? For policymakers, how do we demonstrate what the community is lacking?

## References

Guttmacher Institute. State facts about abortion; 2018 [Louisiana, <https://www.guttmacher.org/fact-sheet/state-facts-about-abortion-louisiana>, accessed 01/07/2019].

## Infographics

Louisiana enforces many overburdening regulations on abortion clinics, significantly reducing women's accessibility to reproductive services. To convey this information, along with data on all women who obtain abortions in the U.S., I created 3 infographics using information from both liftlouisiana.org and statistics given by the Guttmacher Institute. These allow us to address and track progress (and the lack thereof) in effective policy for the wellbeing of women in Louisiana.



## EC in ERs

In order to assess the availability of emergency contraception in emergency rooms across Louisiana, I conducted a survey throughout all 98 hospitals with emergency rooms in Louisiana. The questions I asked focused on EC provision to sexual assault survivors specifically. After introducing myself and the purpose of the call, I asked the following yes-or-no questions:

1. Does [hospital] provide information about EC to sexual assault survivors?
2. Where is this information from?
3. If requested, does the hospital dispense EC on the site?

Only 18 ERs answered my questions, signaling a need to alter my methodology to better adapt to ERs' fast-paced environment. I collaborate with a pediatric resident at LSU in the next semester to continue this study.

## Acknowledgements

I would like to thank Michelle Erenberg for including me in fighting for Lift's mission. I would like to thank Prof. Daniel for introducing me to the RR & RH Internship Program, as well as the Donna and Richard Esteves Fund for Reproductive Rights and Reproductive health.